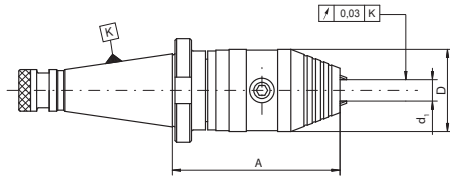


7662



- Bohrfutter für Rechts- und Linkslauf
- Drill chucks for clockwise and counter clockwise rotations



Artikel Nr. Code No.	K 7:24	d ₁	Spannkraft Clamping force	A	D
800006593	40	1-13	40Nm	102	50
800006594	40	3-16	45Nm	102	50
800006595	50	1-13	40Nm	99	50
800006596	50	3-16	45Nm	99	50

7620



- Weldon Flächenspannfutter zur Aufnahme von Werkzeugen mit Zylinderschaft und seitlicher Mitnehmerfläche nach DIN 1835-B
- Weldon type end mill holders DIN 1835-B

Artikel Nr. Code No.	K 7:24	d	A	D	Abb. Fig.	
800001910	30	6	40	25	1	U-4131/0
800001911	30	8	40	28	1	U-4132/0
800001912	30	10	40	35	1	U-4133/0
800001913	30	12	40	42	1	U-4134/0
800001914	30	16	50	48	1	U-4135/0
800001915	30	20	63	52	1	U-4136/0
800001916	30	25	68	63	2	2 x U-4137/0
800001917	40	6	25	25	3	U-4131/0
800001918	40	6	50	25	1	U-4131/0
800001919	40	8	25	28	3	U-4132/0
800001920	40	8	50	28	1	U-4132/0
800001921	40	10	27	35	3	U-4133/0
800001922	40	10	50	35	1	U-4133/0
800001923	40	12	29	42	3	U-4134/0
800001924	40	12	50	42	1	U-4134/0
800001925	40	14	30	44	3	U-4134/0
800001926	40	14	50	44	1	U-4134/0
800001927	40	16	31	44	3	U-5887/0
800001928	40	16	63	48	1	U-4135/0
800001929	40	18	63	50	1	U-4135/0
800001930	40	20	35	52	3	U-6756/0
800001931	40	20	63	52	1	U-4136/0
800001932	40	25	60	65	4	U-6756/0 U-4137/0
800001933	40	25	80	63	2	2 x U-4137/0
800001934	40	32	70	72	2	2 x U-4138/0
800001935	40	32	80	72	2	2 x U-4138/0
800001936	40	32	100	72	2	2 x U-4138/0
800001937	50	6	63	25	1	U-4131/0
800001938	50	6	130	25	1	U-4131/0
800001939	50	8	63	28	1	U-4132/0
800001940	50	8	130	28	1	U-4132/0
800001941	50	10	63	35	1	U-4133/0
800001942	50	10	130	35	1	U-4133/0
800001943	50	12	63	42	1	U-4134/0
800001944	50	12	130	42	1	U-4134/0
800001945	50	14	63	44	1	U-4135/0
800001946	50	16	63	48	1	U-4135/0
800001947	50	16	130	48	1	U-4135/0
800001948	50	16	160	48	1	U-4135/0
800001949	50	16	200	48	1	U-4135/0
800001950	50	18	63	50	1	U-4135/0
800001951	50	20	36	52	3	U-4136/0
800001952	50	20	63	52	1	U-4136/0
800001953	50	20	130	52	1	U-4136/0
800001954	50	25	60	65	4	2 x U-4137/0
800001955	50	25	80	65	2	2 x U-4137/0
800001956	50	25	130	65	2	2 x U-4137/0
800001957	50	25	160	65	2	2 x U-4137/0
800001958	50	32	70	70	4	2 x U-4138/0
800001959	50	32	81	70	2	2 x U-4138/0
800001960	50	32	100	70	2	2 x U-4138/0
800001961	50	32	130	72	2	2 x U-4138/0
800001962	50	32	160	72	2	2 x U-4138/0
800001963	50	40	91	90	2	2 x U-4138/0
800001964	50	40	100	90	2	2 x U-4138/0
800001965	50	50	110	97	2	2 x U-4139/0
800001966	50	63	115	97	2	2 x U-4139/0

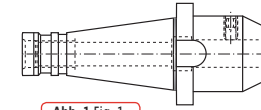


Abb. 1 Fig. 1

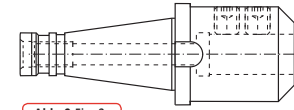


Abb. 2 Fig. 2

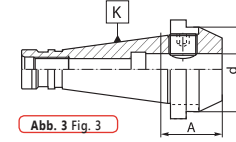


Abb. 3 Fig. 3

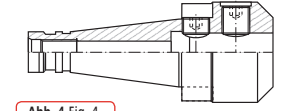


Abb. 4 Fig. 4

7620 QC



- Weldon Flächenspannfutter zur Aufnahme von Werkzeugen mit Zylinderschaft und seitlicher Mitnehmerfläche nach DIN 1835-B - Schnellwechselsystem
- Weldon Type type end mill holders DIN 1835-B - quick change version

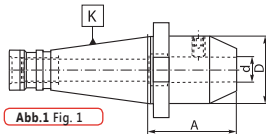


Abb. 1 Fig. 1

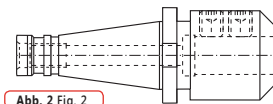


Abb. 2 Fig. 2

Artikel Nr. Code No.	K 7:24	d	A	D	Abb. Fig.	
800001967	30	6	50	25	1	U-4131/0
800001968	30	8	50	28	1	U-4132/0
800001969	30	10	50	35	1	U-4133/0
800001970	30	12	50	42	1	U-4134/0
800001971	30	16	63	48	1	U-4135/0
800001972	30	20	63	52	1	U-4136/0
800001973	40	6	50	25	1	U-4131/0
800001974	40	8	50	28	1	U-4132/0
800001975	40	10	50	35	1	U-4133/0
800001976	40	12	50	42	1	U-4134/0
800001977	40	14	63	42	1	U-4134/0
800001978	40	16	63	48	1	U-4135/0
800001979	40	20	63	52	1	U-4136/0
800001980	40	25	85	63	2	U-4137/0 U-4137/0
800001981	40	32	90	72	2	U-4138/0 U-4138/0

7627



- Whistle-Notch Aufnahme für Werkzeuge mit Zylinderschaft und geneigter Spannfläche nach DIN 1835-E
- Whistle-notch type end mills DIN 1835-E

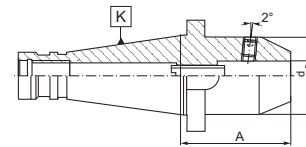


Abb. 1 Fig. 1

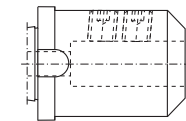


Abb. 2 Fig. 2

Artikel Nr. Code No.	K 7:24	d	d ₁	A	Abb. Fig.		
800002327	40	6	25	50	1	U-4131/0	U-1599/0
800002328	40	8	28	50	1	U-4132/0	U-6317/0
800002329	40	10	35	50	1	U-4133/0	U-0293/0
800002330	40	12	42	50	1	U-4134/0	U-0757/0
800002331	40	14	44	50	1	U-4134/0	U-6318/0
800002332	40	16	48	63	1	U-4135/0	U-6318/0
800002333	40	18	50	63	1	U-4136/0	U-6793/0
800002334	40	20	52	63	1	U-4136/0	U-6793/0
800002335	40	25	65	80	2	2 x U-4137/0	U-6794/0
800002336	40	32	72	80	2	2 x U-4138/0	U-6794/0
800002337	50	6	25	63	1	U-4131/0	U-1599/0
800002338	50	8	28	63	1	U-4132/0	U-6317/0
800002339	50	10	35	63	1	U-4133/0	U-0293/0
800002340	50	12	42	63	1	U-4134/0	U-0757/0
800002341	50	14	44	63	1	U-4135/0	U-6318/0
800002342	50	16	48	63	1	U-4135/0	U-6318/0
800002343	50	18	50	63	1	U-4136/0	U-6793/0
800002344	50	20	52	63	1	U-4136/0	U-6793/0
800002345	50	25	65	80	2	2 x U-4137/0	U-6794/0
800002346	50	32	72	80	2	2 x U-4138/0	U-6794/0
800002347	50	40	90	90	2	2 x U-5870/0	U-6794/0