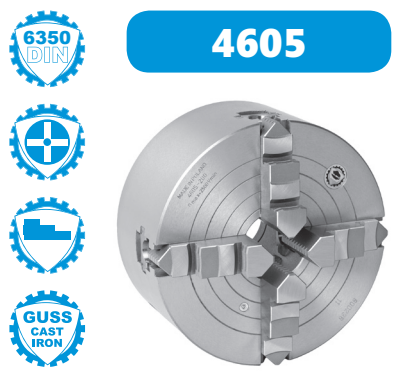


1
2
3
4
5
6
7

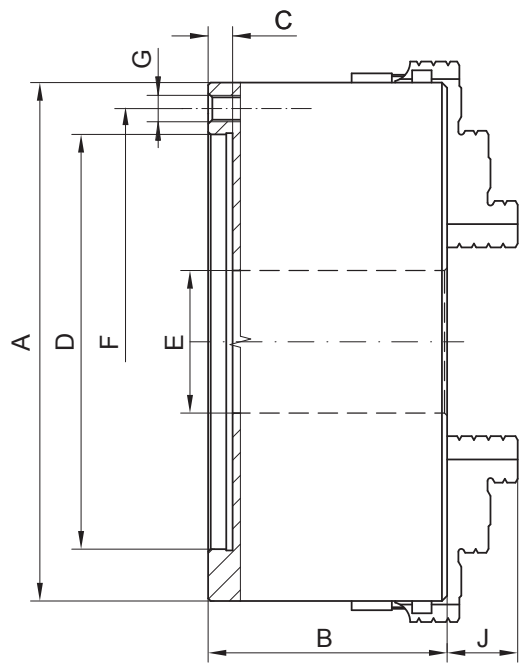
4605

4805



4605

- Standard Zubehör**
Standard accessories
- 1 Satz harte Umkehrbacken**
1 Set of solid reversible jaws
 - 1 Schlüssel**
1 Wrench
- Ersatzteile • Spare parts 94-105**
- Technische Daten • Technical data 106-112**



- Backen einzeln verstellbar
- Backen zentrisch spannend
- Individually adjustable jaws
- Self-centering jaw clamping

| Artikel Nr. Code No. | Typ Type |
|-------------------------|-------------|
| 354605020700 | 4605-200 |
| 354605030900 | 4605-250 |
| 354605040000 | 4605-315 |
| 354605050200 | 4605-400 |
| 354605060400 | 4605-500 |
| 354605070600 | 4605-630 |

| A | B | C | D | E | F | G | J |
|-----|-----|----|-----|-----|-----|-------|------|
| 200 | 96 | 5 | 160 | 55 | 176 | 6xM10 | 31 |
| 250 | 102 | 6 | 200 | 76 | 224 | 6xM12 | 33 |
| 315 | 117 | 6 | 260 | 103 | 286 | 6xM16 | 41,5 |
| 400 | 123 | 6 | 330 | 136 | 362 | 6xM16 | 59 |
| 500 | 145 | 8 | 420 | 190 | 458 | 6xM16 | 61 |
| 630 | 160 | 10 | 545 | 252 | 586 | 6xM16 | 72 |

Größere Durchmesser finden Sie auf Seite 74-87! • Larger diameters available on page 74-87!



4805

- Standard Zubehör**
Standard accessories
- 1 Satz harte Umkehrbacken**
1 Set of solid reversible jaws
 - 1 Schlüssel**
1 Wrench
- Ersatzteile • Spare parts 94-105**
- Technische Daten • Technical data 106-112**

| Typ Type | Artikel Nr. Code No. |
|-------------|-------------------------|
| 4805-200 | 354805520400 |
| 4805-250 | 354805530600 |
| 4805-315 | 354805540800 |
| 4805-400 | 354805550000 |
| 4805-500 | 354805560100 |
| 4805-630 | 354805570300 |