

OUR SPECIALTY
**WORK
BENCHES**
FOR ALL!

sjobergs.se

multi function bench 1060

SPECIFICATIONS	inches	mm
SJÖBERGS MULTI FUNCTION BENCH 1060		
Nr 33820		
Length of worktop	41 ^{47/64}	1060
Total length	46 ^{27/32}	1190
Width of worktop	19 ^{21/32}	500
Total width	24 ^{51/64}	630
Thickness of worktop	1 ^{3/32}	28
Thickness of skirt	2 ^{3/4}	70
Vise capacity	4 ^{1/2}	115
Working height	35 ^{7/16}	900
Weight	74 lbs	34 kg

MULTI FUNCTION BENCH 1060
– THE BENCH WITH ENDLESS
OPPORTUNITIES!

The top is made of beech and works both as a carpenters' bench and workbench with endless opportunities to fixate the working process. Except the strategic holes in the board, the bench is also equipped with two vises that enables clamping. The size of the holes for holdfast and bench dogs is 19,2 mm/ 3/4 inches. HOLDFAST ST11 also fits the trestle. All the Sjöbergs accessories make this bench very flexible.

SJÖBERGS MULTI FUNCTION BENCH 1060

Nr 33820



accessories
**MULTI FUNCTION BENCH
1060**



Nr 33301

Package size MULTI FUNCTION BENCH 1060, 1230x700x100 mm

SJÖBERGS MULTI FUNCTION BENCH 1060



Nr 33820

EAN 7316703820108

ST11 HOLDFAST

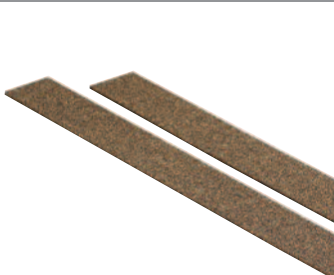


Nr 33639

EAN 7316703639113



JAW CUSHIONS



Nr 33381

EAN 7366703381104

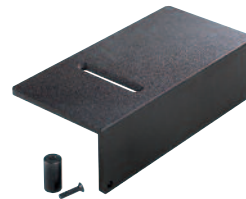
BENCH DOGS



Nr 33290 4-pack

EAN 7316703290345

ANVIL



Nr 33617

EAN 7316703617104

FILE CLAMP



Nr 33492

EAN 7316703492107



SJÖBERGS WORKBENCHES AB
SE- 576 95 Stockaryd • Sweden
Tel +46 (0)382-257 00
office@sjobergs.se • sjobergs.se

